

## Eye Nuts - Style A C1030

Drop Forged Carbon Steel, Self-Colored  
 ASTM A105 Tapped: UNC-2B

Stock No.	T	A	B	C	D	E	F	G	Rated Capty. Lbs.	Weight Lbs.	(Combination pricing on Style A C1030 Eye Nuts) Price Per Piece		
	Dia. & Thread UNC-2B	Bell	Thread Length	Eye I.D.	Eye O.D.	Overall Length	Bail Dia. Thick.	I.D. Length			1-499	500-999	1000+
EN-3	3/8-16	7/8	5/8	1 1/4	2	2 1/2	3/8	1 1/2	2,700	0.25			
EN-5	1/2-13	7/8	5/8	1 1/4	2	2 1/2	3/8	1 1/2	2,700	0.23			
EN-7	5/8-11	1 3/8	3/4	1 1/2	2 1/2	3	1/2	1 3/4	5,000	0.56			
EN-8	3/4-10	1 3/8	3/4	1 1/2	2 1/2	3	1/2	1 3/4	5,000	0.55			

Blanks in stock. Inquire for price.

## Eye Nuts - Style A C1030 - Metric

Drop Forged Carbon Steel, Self-Colored  
 ASTM A105 Tapped: ISO Coarse Thread-6H

Stock No.	T	A	B	C	D	E	F	G	Rated Capty. in Kgs.	Rated Capty. in Lbs.	Weight Lbs.	(Combination pricing on Style A C1030-Metric Eye Nuts) Price Per Piece			
	Approx. Equiv. in Inches	Dia. & Thread	Bell	Thread Length	Eye I.D.	Eye O.D.	Overall Length	Bail Dia. Thick.				I.D. Length	1-499	500-999	1000+
EN-M8	3/8	M8 x 1.25	7/8	5/8	1 1/4	2	2 1/2	3/8	1 1/2	1,225	2,700	0.25			
EN-M10	7/16	M10 x 1.50	7/8	5/8	1 1/4	2	2 1/2	3/8	1 1/2	1,225	2,700	0.24			
EN-M12	1/2	M12 x 1.75	7/8	5/8	1 1/4	2	2 1/2	3/8	1 1/2	1,225	2,700	0.23			
EN-M16	5/8	M16 x 2.00	1 3/8	3/4	1 1/2	2 1/2	3	1/2	1 3/4	2,268	5,000	0.56			
EN-M18	3/4	M18 x 2.50	1 3/8	3/4	1 1/2	2 1/2	3	1/2	1 3/4	2,268	5,000	0.55			

Blanks in stock. Inquire for price.

## Eye Nuts - Style A C1030 - Zinc Plated

Drop Forged Carbon Steel  
 ASTM A105 Tapped: UNC-2B before plating

Stock No.	T	A	B	C	D	E	F	G	Rated Capty. Lbs.	Weight Lbs.	(Combination pricing on Style A C1030-Zinc Plated Eye Nuts) Price Per Piece		
	Dia. & Thread UNC-2B	Bell	Thread Length	Eye I.D.	Eye O.D.	Overall Length	Bail Dia. Thick.	I.D. Length			1-499	500-999	1000+
EN-3-ZN	3/8-16	7/8	5/8	1 1/4	2	2 1/2	3/8	1 1/2	2,700	0.25			
EN-5-ZN	1/2-13	7/8	5/8	1 1/4	2	2 1/2	3/8	1 1/2	2,700	0.23			

## Eye Nuts - Style A C1030 - Galvanized

Drop Forged Carbon Steel  
 ASTM A105 Tapped oversized: UNC-2B 3/8"-3/4" + 0.021 Thous.

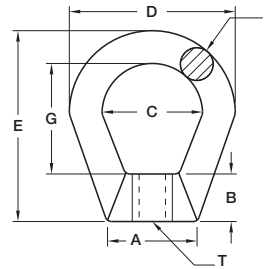
Stock No.	T	A	B	C	D	E	F	G	Rated Capty. Lbs.	Weight Lbs.	(Combination pricing on Style A C1030-Galvanized Eye Nuts) Price Per Piece		
	Dia. & Thread UNC-2B	Bell	Thread Length	Eye I.D.	Eye O.D.	Overall Length	Bail Dia. Thick.	I.D. Length			1-499	500-999	1000+
EN-3-HDG	3/8-16	7/8	5/8	1 1/4	2	2 1/2	3/8	1 1/2	2,700	0.25			
EN-5-HDG	1/2-13	7/8	5/8	1 1/4	2	2 1/2	3/8	1 1/2	2,700	0.23			
EN-7-HDG	5/8-11	1 3/8	3/4	1 1/2	2 1/2	3	1/2	1 3/4	5,000	0.56			
EN-8-HDG	3/4-10	1 3/8	3/4	1 1/2	2 1/2	3	1/2	1 3/4	5,000	0.55			

## Eye Nuts - Style A C1045

Drop Forged Carbon Steel, Self-Colored  
 ASTM A194-2H Tapped: UNC-2B

Stock No.	T	A	B	C	D	E	F	G	Rated Capty. Lbs.	Weight Lbs.	(Combination pricing on Style A C1045 Eye Nuts) Price Per Piece		
	Dia. & Thread UNC-2B	Bell	Thread Length	Eye I.D.	Eye O.D.	Overall Length	Bail Dia. Thick.	I.D. Length			1-499	500-999	1000+
EN-3-2H	3/8-16	7/8	5/8	1 1/4	2	2 1/2	3/8	1 1/2	2,700	0.25			
EN-5-2H	1/2-13	7/8	5/8	1 1/4	2	2 1/2	3/8	1 1/2	2,700	0.23			
EN-7-2H	5/8-11	1 3/8	3/4	1 1/2	2 1/2	3	1/2	1 3/4	5,000	0.56			
EN-8-2H	3/4-10	1 3/8	3/4	1 1/2	2 1/2	3	1/2	1 3/4	5,000	0.55			

Blanks in stock (Not heat treated). Inquire for price.



Style A

## Eye Nuts - Style A C1045 - Zinc Plated

Drop Forged Carbon Steel  
 ASTM A194-2H  
 Tapped: UNC-2B before plating

Stock No.	T Dia. & Thread UNC-2B	A Bell	B Thread Length	C Eye I.D.	D Eye O.D.	E Overall Length	F Bail Dia. Thick.	G I.D. Length	Rated Capty. Lbs.	Weight Lbs.	(Combination pricing on Style A C1045 Eye Nuts) Price Per Piece		
											1-499	500-999	1000+
EN-3-2H-ZN	3/8-16	7/8	5/8	1 1/4	2	2 1/2	3/8	1 1/2	2,700	0.25			
EN-5-2H-ZN	1/2-13	7/8	5/8	1 1/4	2	2 1/2	3/8	1 1/2	2,700	0.23			
EN-7-2H-ZN	5/8-11	1 3/8	3/4	1 1/2	2 1/2	3	1/2	1 3/4	5,000	0.56			
EN-8-2H-ZN	3/4-10	1 3/8	3/4	1 1/2	2 1/2	3	1/2	1 3/4	5,000	0.55			

## Eye Nuts - Style A 304 Stainless

Drop Forged Stainless Steel, Passivated & Electropolished  
 ASTM A194-8  
 Tapped: UNC-2B

Stock No.	T Dia. & Thread UNC-2B	A Bell	B Thread Length	C Eye I.D.	D Eye O.D.	E Overall Length	F Bail Dia. Thick.	G I.D. Length	Rated Capty. Lbs.	Weight Lbs.	(Combination pricing on Style A 304 Stainless Eye Nuts) Price Per Piece		
											1-499	500-999	1000+
EN-3-SS	3/8-16	7/8	5/8	1 1/4	2	2 1/2	3/8	1 1/2	2,700	0.25			
EN-5-SS	1/2-13	7/8	5/8	1 1/4	2	2 1/2	3/8	1 1/2	2,700	0.23			
EN-7-SS	5/8-11	1 3/8	3/4	1 1/2	2 1/2	3	1/2	1 3/4	5,000	0.56			
EN-8-SS	3/4-10	1 3/8	3/4	1 1/2	2 1/2	3	1/2	1 3/4	5,000	0.55			

Blanks in stock (Not passivated or electropolished). Inquire for price.

## Eye Nuts - Style A 316 Stainless

Drop Forged Stainless Steel, Passivated & Electropolished  
 ASTM A194-8M  
 Tapped: UNC-2B

Stock No.	T Dia. & Thread UNC-2B	A Bell	B Thread Length	C Eye I.D.	D Eye O.D.	E Overall Length	F Bail Dia. Thick.	G I.D. Length	Rated Capty. Lbs.	Weight Lbs.	(Combination pricing on Style A 316 Stainless Eye Nuts) Price Per Piece		
											1-499	500-999	1000+
EN-3-316SS	3/8-16	7/8	5/8	1 1/4	2	2 1/2	3/8	1 1/2	2,700	0.25			
EN-5-316SS	1/2-13	7/8	5/8	1 1/4	2	2 1/2	3/8	1 1/2	2,700	0.23			
EN-7-316SS	5/8-11	1 3/8	3/4	1 1/2	2 1/2	3	1/2	1 3/4	5,000	0.56			
EN-8-316SS	3/4-10	1 3/8	3/4	1 1/4	2 1/2	3	1/2	1 3/4	5,000	0.55			

Blanks in stock (Not passivated or electropolished). Inquire for price.

## Eye Nuts - Style B C1030

Drop Forged Carbon Steel, Self-Colored  
 ASTM A105  
 Tapped: UNC-2B

Stock No.	T Dia. & Thread UNC-2B	A Bell	B Thread Length	C Eye I.D.	D Eye O.D.	E Overall Length	F Bail Dia. Thick.	G I.D. Length	Rated Capty. Lbs.	Weight Lbs.	(Combination pricing on Style B C1030 Eye Nuts) Price Per Piece		
											1-499	500-999	1000+
EN-9-HD	7/8-9	2 1/32	1 11/32	1 5/8	3 3/8	3 31/32	7/8	1 3/4	14,400	1.82			
EN-10-HD	1-8	2 9/32	1 11/16	1 3/4	3 3/4	4 27/32	1 1/32	2 3/16	18,800	2.80			
EN-12-HD	1 1/4-7	3 1/8	2 7/32	2 1/2	5 1/4	6 5/8	1 3/8	3 1/32	29,400	7.83			
EN-14-HD	1 1/2-6	3 1/8	2 7/32	2 1/2	5 1/4	6 5/8	1 3/8	3 1/32	35,600	7.43			

Blanks in stock. Inquire for price.